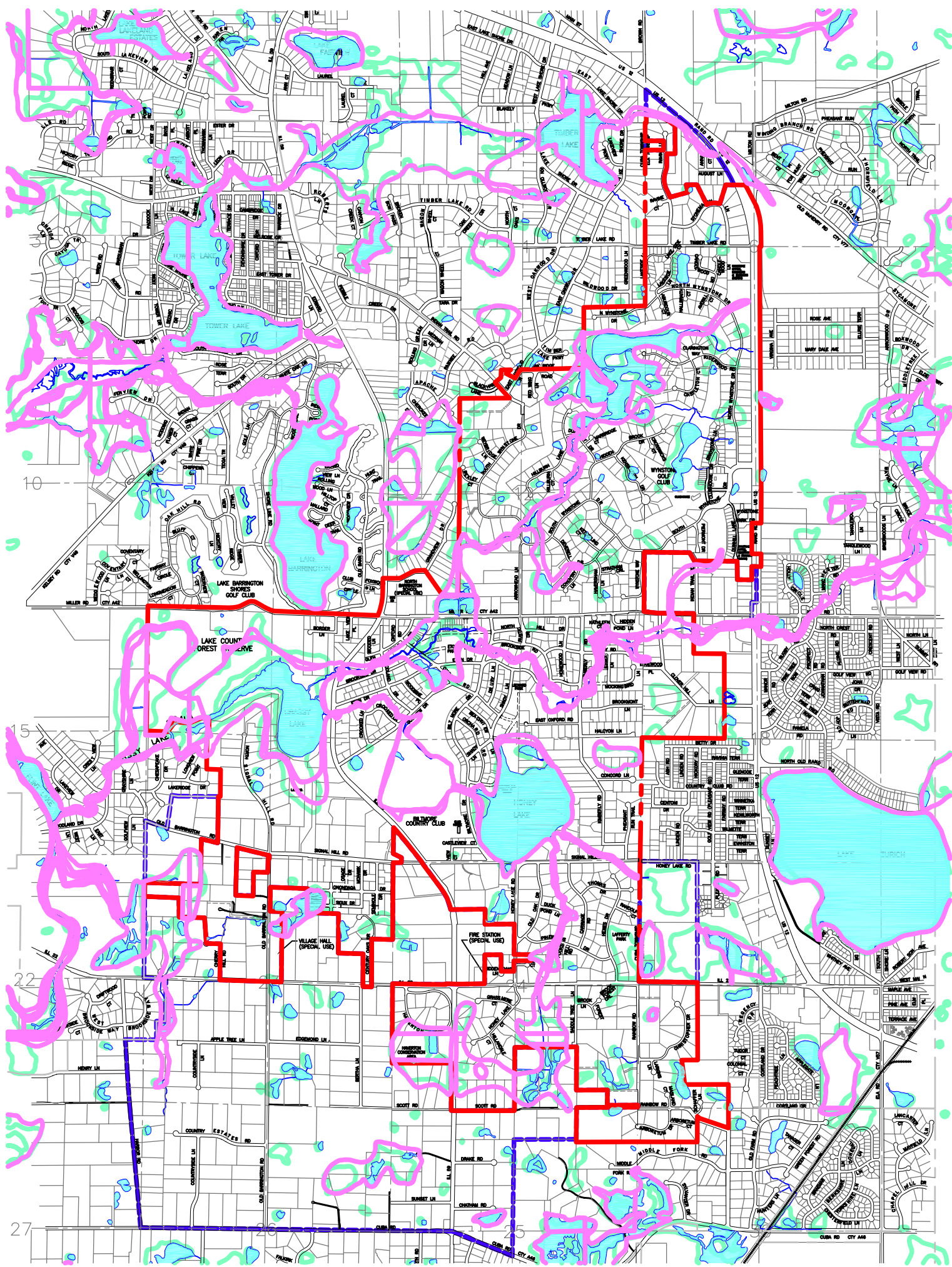
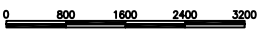
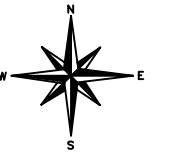


VILLAGE OF NORTH BARRINGTON, ILLINOIS

FEMA - WETLANDS MAP



- LEGEND**
- CORPORATE LIMITS
 - JURISDICTIONAL BOUNDARY
 - SECTION LINE & NUMBER
 - HOUSE NUMBER
 - UNDEVELOPED RIGHT OF WAY
 - LAKES, PONDS OR OPEN WATER
 - WETLANDS
 - FLOODPLAIN

PREPARED BY: G.I.S. DIVISION
 DATE: 08/20/08



Baxter & Woodman
 Crystal Lake, Illinois 815.489.1800
 Burlington, Wisconsin 888.755.7554
 Alton, Illinois 708.478.2000
 DuQuoin, Illinois 815.787.0111
 Oquawka, Illinois 815.853.6008

THE BASE STREET AND LOT MAP PROVIDED BY:
 LAKE COUNTY, ILLINOIS
 DEPARTMENT OF MANAGEMENT SERVICES
 G.I.S. DIVISION